



Rabbit anti SOX-9 (paired S181) Polyclonal Antibody

Alternative Name(s): SRY (sex determining region Y)-box 9

Order Information

- **Description:** SOX-9 (paired S181)
- **Catalogue:** 620-280
- **Lot:** See label
- **Size:** 100ug/200ul
- **Host:** Rabbit
- **Clone:** nan
- **Application:** IHC(P), WB
- **Reactivity:** Hu, Ms, Rt

ANTIGEN PREPARATION

A synthetic peptide surrounding the epitope –RKSVK- without phosphorylation. This sequence is identical among human, rat, mouse, bovine, chicken, and dog.

BACKGROUND

The SOX9 is a member of the SOX [Sry-related high-mobility group (HMG) box] family of HMG DNA-binding domain transcription factors and is required for the development and differentiation of multiple cell lineages. SOX9 is expressed in primary prostate cancers in vivo, at a higher frequency in recurrent prostate cancer and in prostate cancer cell lines (LNCaP, CWR22, PC3, and DU145). It has been reported that the cAMP/PKA stimulation induces SOX-9 nuclear translocation via facilitating its nuclear import by the phosphorylation of SOX-9 at Ser64 and Ser181. SOX9 in prostate basal cells supports the development and maintenance of the luminal epithelium and that a subset of prostate cancer cells may escape basal cell requirements through SOX9 expression.

PURIFICATION

The Rabbit IgG is purified by Epitope Affinity Purification

FORMULATION

This affinity purified antibody is supplied in sterile Phosphatebuffered saline (pH7.2) containing antibody stabilizer

SPECIFICITY

This antibody recognizes ~56 kDa of human SOX-9 protein without phosphorylation at S181. It does not recognize the phosphorylation protein at Swe 181. This antibody also reacts with mouse and rat. The other species are not tested.

STORAGE

The antibodies are stable for 24 months from date of receipt when stored at –20oC to –70oC. The antibodies can be stored at 2oC-8oC for three month without detectable loss of activity. Avoid repeated freezing-thawing cycles.

APPLICATIONS/SUGGESTED WORKING DILUTIONS*

- Western Blot: 0.1-1 µg/ml
- ELISA: 0.01-0.1 µg/ml
- Immunoprecipitation: 2-5 µg/ml
- IHC: 2-10 µg/ml
- Flow cytometry: Not tested
- Molecular Weight: 70.0
- Positive Control: Kidney Tissue
- Cellular Location: Cell Membrane

*Optimal dilutions should be determined by researchers for the specific applications.

FOR RESEARCH USE ONLY.

AbboMax, Inc 2528 Qume Drive, Suite 8, San Jose, California 95131, USA
1 408-573-1898 (Tel). 1 408-573-1858 (Fax). www.abbomax.com info@abbomax.com

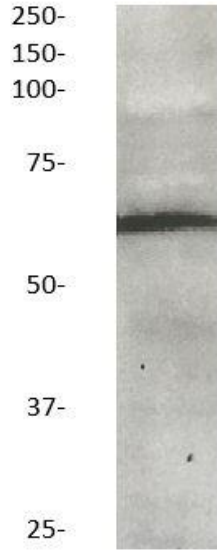


FOR RESEARCH USE ONLY.

AbboMax, Inc 2528 Qume Drive, Suite 8, San Jose, California 95131, USA
1 408-573-1898 (Tel). 1 408-573-1858 (Fax). www.abbomax.com info@abbomax.com

DATA ATTACHMENTS

MW (kDa) **1**



Western Blot: The whole cell lysate derived from LNCaP prostate Carcinoma immunoblotted Rabbit anti-SOX-9 (Paired 181) (Cat#620-280) at 1:500 (Lane 1). Lane 2 is a negative control. Observed a major immunoreactive band at molecular weight kDa.

REFERENCES

FOR RESEARCH USE ONLY.